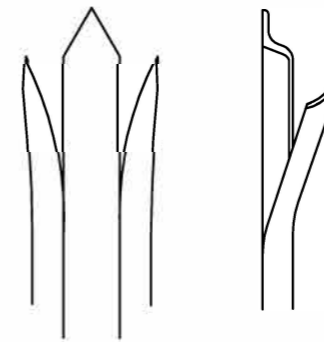
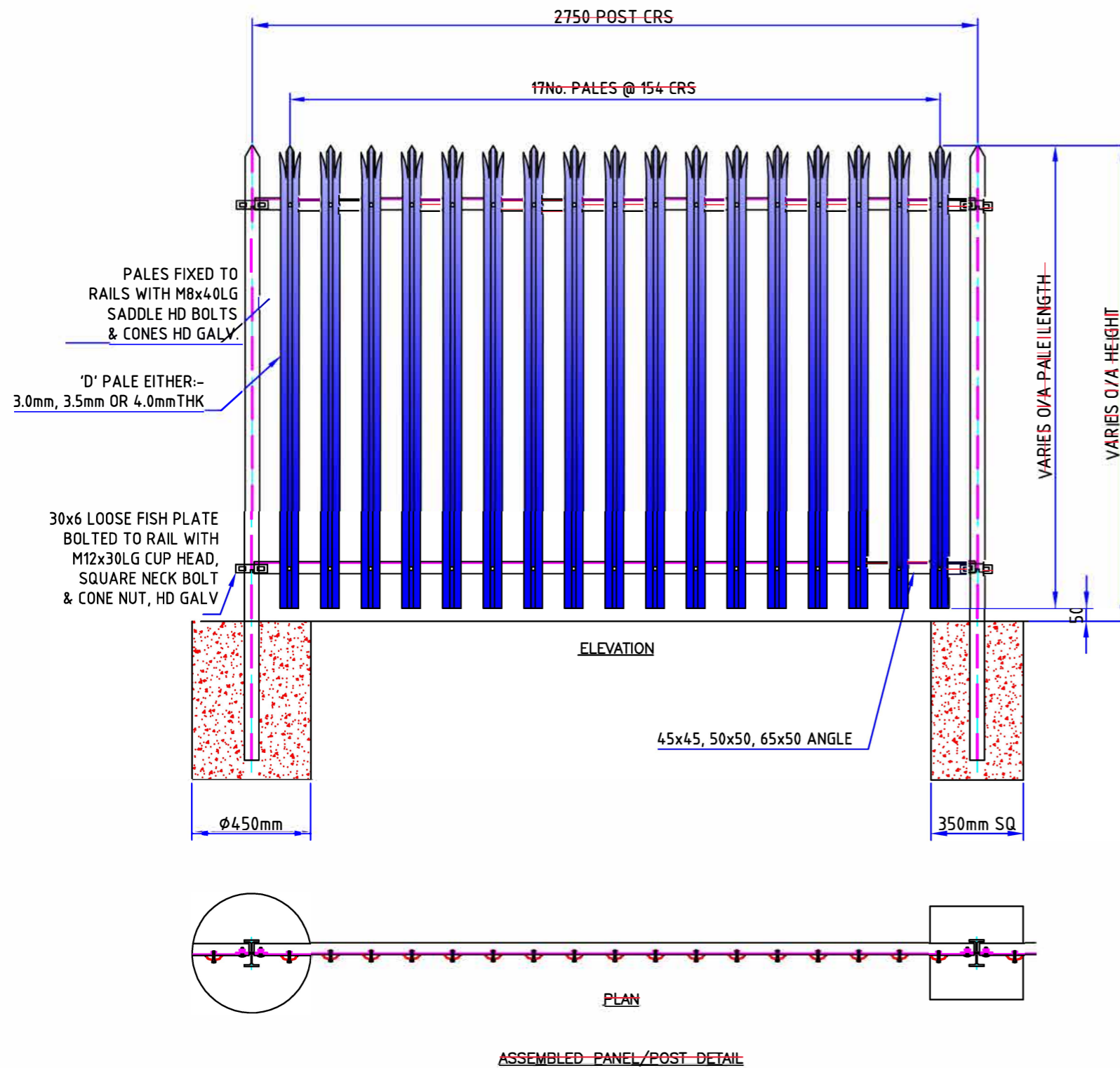


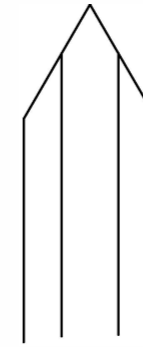
MUST BE READ IN-CONJUNCTION WITH WORKS INSTRUCTION SHEET

OF

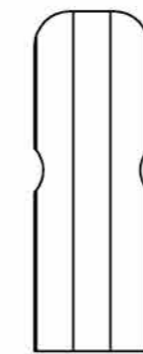
IF IN DOUBT ASK



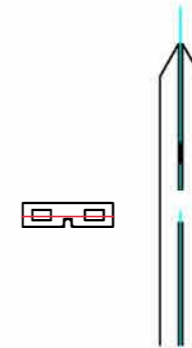
TRIPLE POINTED



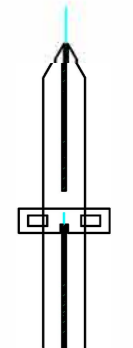
SINGLE POINTED



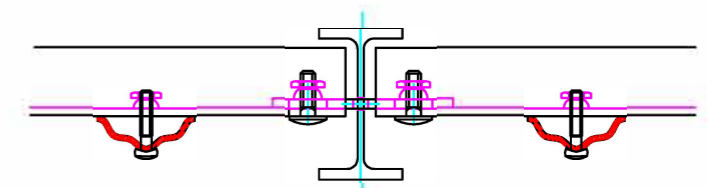
ROUNDED & NOTCHED



SECTION THROUGH POST



SECTION THROUGH POST



'D' PALE PALISADE FENCING

REV	DESCRIPTION OF CHANGE	REVISIONS	NAME	DATE

Etna-s, Duke

Fencing

Web Site: barkersfencing.com

ALL DIMENSIONS IN MILLIMETRES UNLESS STATED OTHERWISE
 NORMAL TOLERANCES UNLESS STATED OTHERWISE
 UPTO - 1000mm +/- 1.0mm
 OVER - 1000mm +/- 2.0mm
 PLEASE NOTE THAT THIS ORDER WILL BE ACCEPTED BY US STRICTLY ON CONDITION THAT CONFORMITY TO ANY SPECIFICATION TO

THE INFORMATION CONTAINED IN THIS DRAWING IS THE PROPERTY OF "BARKERS ENGINEERING LTD". COPYRIGHT IS RESERVED BY THEM AND THE CONTENT IS USED ON THE CONDITION THAT IT IS NOT COPIED, REPRODUCED, RETAINED OR DISCLOSED TO ANY UNAUTHORISED PERSON EITHER WHOLLY OR IN PART WITHOUT THE CONSENT IN WRITING OF "BARKERS ENGINEERING LTD".

MATERIAL	TITLE	ORDER No
MATERIAL GRADE: S 235	TYPICAL DETAIL OF 1.8M HIGH 'D' PALISADE 栅栏	
ALL WELDS TO: BS 1722 Pt9	45x45 ANGLE RAILS 100x55 DIG-IN POSTS	
FINISH	CLIENT	CONTRACT No
POWDERCOAT TO: (RAL 0000)	DRAWN BY: LUKE	SCALE DO NOT
GALVANIZED TO: BS EN 1461	CHECKED BY: WAYNE	REV DATE 18.06.19
		DWG No