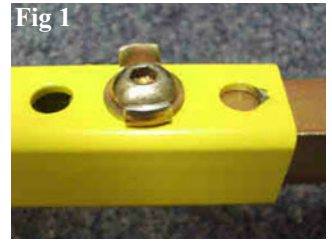


# Bulldog Auto Clamp Fitting Instructions

## INITIAL SETTING UP

First select the three angular steel claws. Select the holes which give the best fit on the tyre width. Secure with button head screws using a gripper washer, as illustrated (see fig 1). When initially trying the clamp around the tyre take care to select which tapped hole gives the tightest fit. The easiest method is:- Insert two of the claws into the gold arm facing inwards to the width of the tyre, then secure each in place with one button head screw using the allen key provided. The third claw locates in the yellow stem facing inwards at the required setting as before.



## BULLDOG AUTO CLAMP SECURED IN APPROX 5-10 SECONDS

### FITTING

1. The auto Clamp is fitted by taking the gold arm twisting it into the angle shown in the picture.
2. Then push the arm into the wheel arch and slide around the wheel into place.
3. The next step is to take the yellow stem and slide it into the gold arm until all three points of the clamp are in contact with the tyre.
4. Then press the lock in until it clicks. When the clamp is unlocked the key is not required to lock it again leaving both hands to secure the clamp in approx 5 - 10 seconds.



### REMOVAL

**IMPORTANT.** To remove clamp, insert key, rotate 1/2 turn, pull on key, and/or press down on gold arm until lock pops out.



We have taken every care in the design and manufacture of this security device and we believe that it is an effective deterrent. However we cannot guarantee that it will resist the efforts of the most determined thief, and as such we do not accept any liability for loss or damage caused by theft, vandalism or other illegal activity against property to which this device is fitted.

#### Lock Lubrication.

**IMPORTANT** - To ensure free movement of the lock, spray lock mechanism & ball bearings with WD40 (or equivalent) minimum every four months.

#### Key Security. Enter your key number here:

**IMPORTANT** - Your Bulldog product is supplied with two keys. Make a note of your personal key number in the space provided above and **keep it in a safe place**. Should you lose your keys, replacements can only be obtained from the manufacturer through your dealer.



Print Ref: REG. PB36-5

This product is guaranteed for 12 months from the date of purchase. In the unlikely event of a manufacturing fault arising with the product, Bulldog will replace or repair the product free of charge. This guarantee is only valid if the product has been used as directed and a valid proof of purchase is provided. This does not affect your statutory rights.