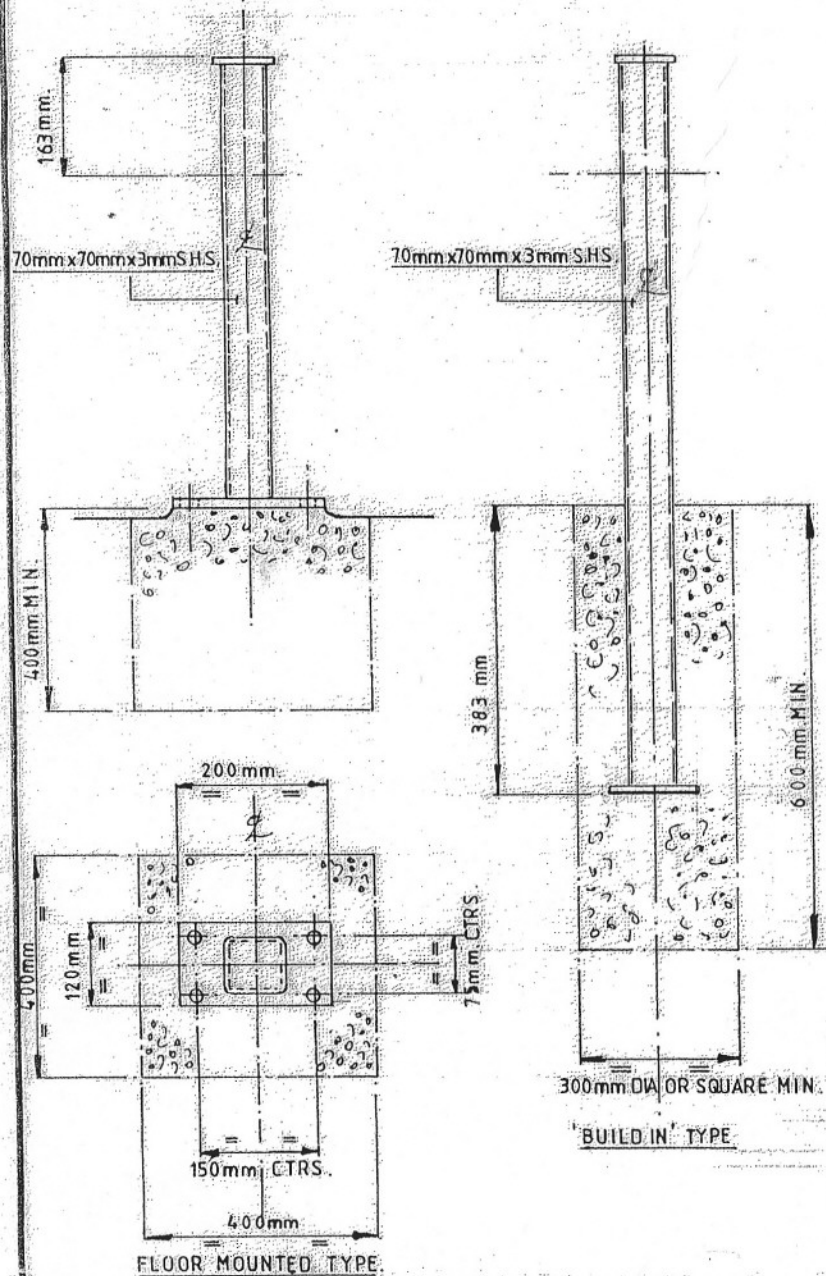


SECTIONAL STEEL BARRIER



FLOOR MOUNTED POSTS

1. After selecting position of post to carry barrier ensure that there are no underground obstructions.
2. Prepare hole approximately 400mm x 400mm x 400mm deep for each post.
3. Flood grout hole with a strong concrete mix (3-2-1 or better).
4. Allow concrete to cure completely.
5. Drill holes for expansion bolts (H. D. Bolts).
6. Bolt post into position.
7. Bolt barrier into position using M12 x 100mm LG cup round square neck coach bolt.

NOTE: Floor Mounted Posts can be mounted directly onto a concrete slab. Provided slab is thick enough. (Minimum 6" thick).

BUILT IN TYPE POSTS

1. After selecting position of post to carry barrier ensure that there are no underground obstructions.
2. Prepare hole approximately 300mm dia or square x 600mm deep min for each post.
3. Flood grout hole with post in position (ensure height and squareness are maintained) with a strong concrete mix.
4. Allow concrete to cure completely.
5. Bolt Barrier into position using M12 x 100mm LG cup round square neck.

FOR FIXING BARRIER INTO POSITION, SEE SKETCH BELOW.

